



INTERPUMPGROUP

E1

I
GB
F

ISTRUZIONI D'USO
INSTRUCTIONS FOR USE
MODE D'EMPLOI

D
E
P

BEDIENUNGSANLEITUNG
INSTRUCCIONES DE USO
INSTRUÇÕES DE USO

Questo manuale deve essere letto e compreso in accordo al libretto generico "Istruzioni d'uso e manutenzione".
This manual must be read and followed in accordance with the generic "Instructions for Use and Maintenance" booklet.

Ce manuel doit être lu et compris en accord avec la notice générale " Mode d'emploi et d'entretien ".

Dieses Handbuch ist in Verbindung mit dem allgemeinen Handbuch " Gebrauchs- und Wartungsanleitung " zu lesen und zu verstehen.

Este manual debe leerse y comprenderse de acuerdo con el manual general "Instrucciones de uso y mantenimiento"

Este manual deve ser lido e interpretado de acordo com o livro genérico "Instruções de uso e manutenção"

53SS

S E R I E S



Modello
Model
Modèle
Modell
Modelo
Modelo

Portata
Flow rate
Débit
Förderstrom
Caudal
Fluxo

Pressione
Pressure
Pression
Druck
Presión
Pressão

g/m
rpm
t/m
up/m
r/m
r/m

Potenza
Power
Puissance
Leistung
Potencia
Poder

Peso
Weight
Poids
Gewicht
Peso
Peso



L/min

gpm

bar

MPa

psi

Hp

kW

Kg

Ibs

Lt.

SS1B1505

5

1,32

150

15

2175

1450

1,9

1,43

6,0

13,2

0,25

SS1B1507

7

1,85

150

15

2175

1450

2,7

2,01

6,0

13,2

0,25

SS1B1509

9

2,38

150

15

2175

1450

3,5

2,58

6,0

13,2

0,25

SS1B1511

11

2,91

150

15

2175

1450

4,3

3,15

6,0

13,2

0,25

SS1B1513

13

3,43

150

15

2175

1450

5,1

3,72

6,0

13,2

0,25

SS1B1514

14

3,70

150

15

2175

1450

5,5

4,01

6,0

13,2

0,25

SS1C1509

9

2,38

150

15

2175

1750

3,5

2,58

6,0

13,2

0,25

SS1C1511

11

2,91

150

15

2175

1750

4,3

3,15

6,0

13,2

0,25

SS1C1513

13

3,43

150

15

2175

1750

5,1

3,72

6,0

13,2

0,25

SS1C1515

15

3,96

150

15

2175

1750

5,8

4,30

6,0

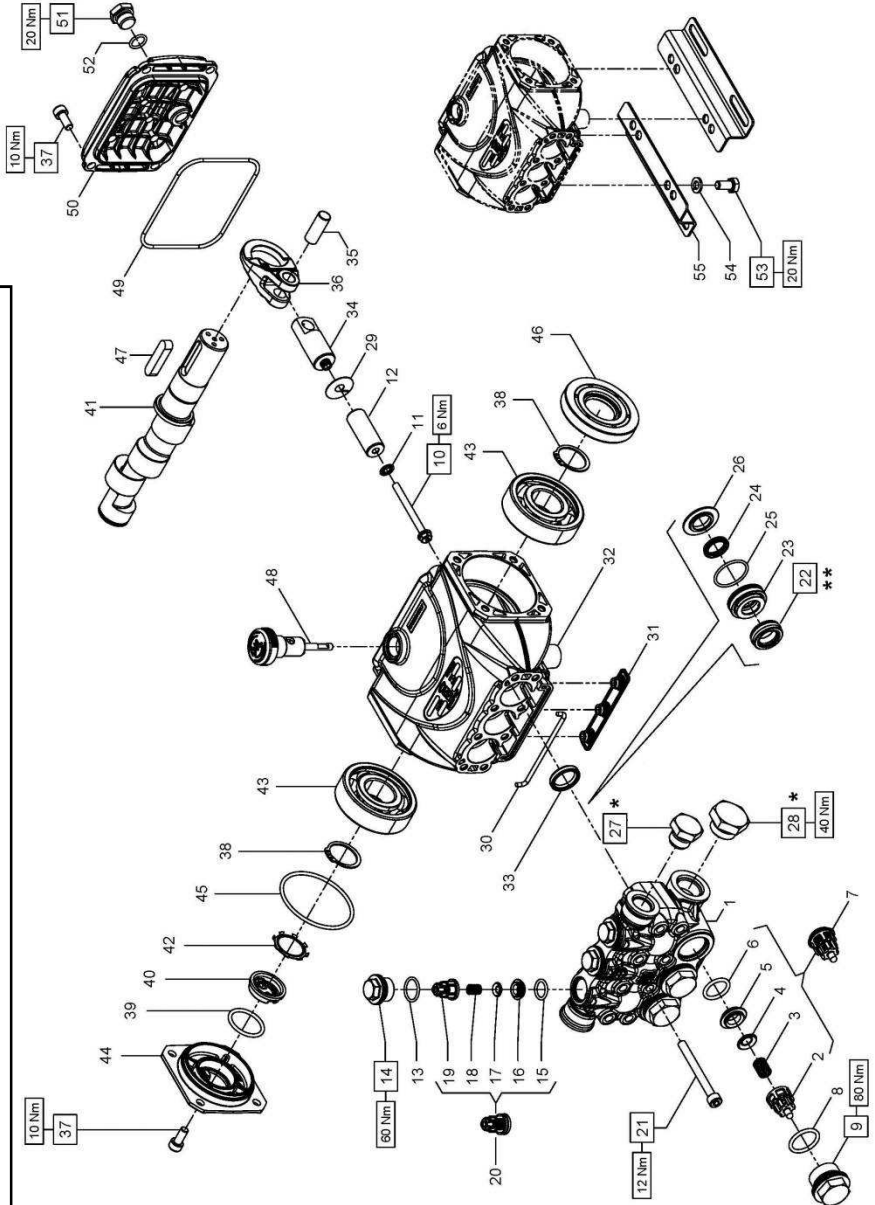
13,2

0,25

- * Fissare con Loctite 542 col. ROSSO
- * Affix with Loctite 542 col. RED
- * Fixer avec de la Loctite 542 couleur ROUGE
- * Mit Loctite 542 ROT befestigen
- * Fijar con Loctite 542 col. ROJO
- * Fixar com Loctite 542 cor. VERMELHA

- ** Lubrificare con grasso al silicone OCILIS 250
- ** To lubricate with silicon grease OCILIS 250
- ** Lubrifier avec gras à la silicone OCILIS 250
- ** Sich mit fett zum Siikon OCILIS 250 schmieren
- ** Para lubricar con la grasa al silicon OCILIS 250
- ** Para lubrificar com a graxa ao silicone OCILIS 250

DIS. COD. 53.9506.00



SS1B1505 - SS1B1507 - SS1B1509
SS1B1511 - SS1B1513 - SS1B1514
SS1C1509 - SS1C1511 - SS1C1513
SS1C1515

PISTONE - PISTON D. 15		PISTONE - PISTON D. 18	
SS1B1505 - SS1B1507 - SS1B1509 SS1C1509 - SS1C1511		SS1B1511 - SS1B1513 - SS1B1514 SS1C1513 - SS1C1515	
POS	COD.	DESCRIZIONE - DESCRIPTION - KIT	NR
1	53.1215.36	Testata pistone D. 18	1
	53.1216.36	Testata pistone D. 15	
2	36.2025.51	Guida valvola	341
3	94.7373.03	Molla Dm. 9.4x14.8	341
4	36.2001.76	Valvola sferica	341
5	36.2036.66	Sede valvola	341
6	90.3841.00	OR D. 17.13x2.62 NBR 70SH 3068	3
7	36.7130.01	Gr. valvola d'aspirazione	341
8	90.3847.00	OR D. 20.29x2.62 NBR 90SH 3081	3
			335
9	98.2214.20	Tappo M24x1.5x13.2	335
10	99.1690.00	Vite M5x55	3
11	96.6905.00	Rosetta D.5.0x11..5x0.4	3
12	63.0405.09	Pistone D.18x38.5	3
	53.0400.09	Pistone D.15x38.5	
13	90.3593.00	OR D. 15.60x1.78 NBR 70SH 2062	336
14	98.2137.20	Tappo M18x1.5x10 D.23 F12	336
15	90.3674.00	OR D. 12.00x2.00 NBR 70SH	334
16	53.2111.66	Sede valvola	334
17	36.2112.76	Valvola sferica	334
18	94.7333.00	Molla Dm. 6.7x10.8	334
19	36.2111.51	Guida valvola	334
20	36.7245.01	Gr. valvola di mandata	334
21	99.1992.00	Vite M6x60 UNI 5931	8

KIT RICAMBI - SPARE KITS

KIT Nr.	KIT 341	KIT 334	KIT 311	KIT 335	KIT 336	KIT 337	KIT 338	KIT 339	KIT 340
Posizioni include Positions included	2 - 3 - 4 5 - 6 (7)	15 - 16 17 - 18 19 (20)	33	8 - 9	13 - 14	22 - 24 25	22 - 23 24 - 25 26	22 - 24 25	22 - 23 24 - 25 26
Nr. Pcs.	3	3	3	3	3	3	1	3	1

POS	COD.	DESCRIZIONE - DESCRIPTION - KIT	NR
	60.0207.65	Albero ecc. C.7.2 - SS1B1505	
	60.0283.35	Albero ecc. C.10.0 - SS1B1507 SS1B1511	
41	53.0200.35	Albero ecc. C.13.0 - SS1B1514	1
	53.0201.35	Albero ecc. C.12.0 - SS1B1509 SS1B1513	
		SS1C1511 SS1C1515	
42	90.0671.00	Anello d'arresto ZJ30	1
43	91.8328.00	Cuscinetto a sfere	2
44	53.1501.22	Coperchio laterale	1
45	90.3898.00	OR D. 56.82x2.62 NBR 70SH 3225	1
46	90.1641.00	Anello rad. D.25.0x62.0x10.0	1
47	91.4892.00	Linguetta 8.0x7.0x35.0	1
48	98.2108.00	Asta livello olio G 3/8"x45	1
49	90.3917.00	OR D. 88.57x2.62 NBR 70SH 3350	1
50	53.1601.22	Coperchio posteriore	1
51	98.2040.00	Tappo G1/4"x9	1
52	90.3585.00	OR D. 10.82x1.78 NBR 70SH 2043	1
53	99.3037.00	Vite M8x16 5739	4
54	96.7016.00	Rosetta D.8.4x14.4x2.0	4
55	50.2000.74	Piedino pompa	2

POS	COD.	DESCRIZIONE - DESCRIPTION - KIT	NR
	90.2160.00	Anello. ten. alt. D.15.0x24.0x8.5 HP	337 338
22	90.2210.00	Anello ten. alt. D.18.0x28.0x10.0 HP	3
			339 340
23	53.2109.56	Supporto guarnizioni D.18	340
	53.2112.56	Supporto guarnizioni D.15	338
24	90.2150.00	Anello ten. alt. D.15.0x19.5 LP	337 338
	90.2200.00	Anello ten. alt. D.18.0x22.5 LP	339 340
25	90.3604.00	OR D. 25.12x1.78 NBR 70SH 2100	3
			337 338 339 340
26	53.2110.56	Anello per tenuta D.18	340
	53.2113.56	Anello per tenuta D.15	338
27	98.2100.66	Tappo G3/8"x13	1
28	98.2180.00	Tappo G1/2"x10	1
29	96.6990.00	Rosetta D.7.5x23.0x0.5	3
30	53.2103.82	Guarnizione spugna D.3.0x85.0	1
31	58.2104.51	Protezione	1
32	53.0101.22	Carter pompa	1
33	90.1593.00	Anello rad. D.18.0x24.0x4.0	311
34	53.0501.66	Guida pistone	3
35	97.7338.00	Spinotto D.10x26.5	3
36	53.0300.22	Bella	3
37	99.1838.00	Vite M6x14 UNI 5931	8
38	90.0635.00	Anello d'arresto A25	2
39	90.3859.00	OR D. 25.07x2.62 NBR 70SH 3100	1
40	53.2108.51	Vetrino spia livello olio	1