



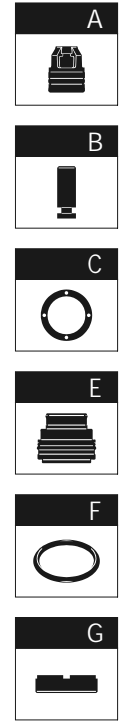
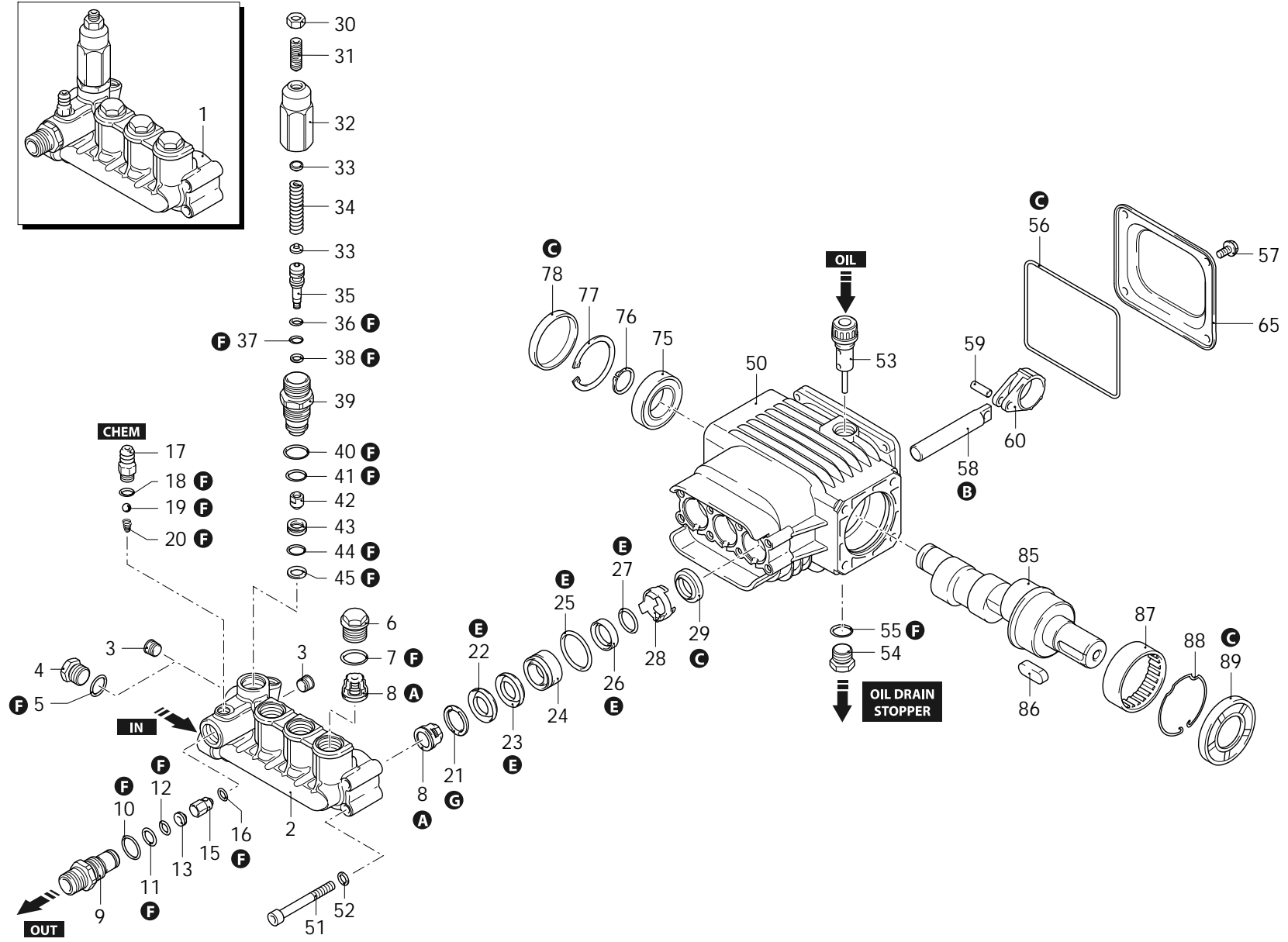
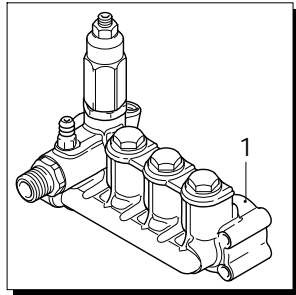
Series 276

RSS

N

2800rpm

ø 24mm



AR_s276-02_v01

06/03/2026



Series 276

RSS

N

2800rpm

ø 24mm

P	Code	Description	Q	Assembly prescription	Validity	P	Code	Description	Q	Assembly prescription	Validity
1	2769226	Head assembly	1	Ø 15		40	1200690	O-ring	1	Lubricate with grease Molykote PG54	
2	2760330	Head	1	brass		41	394280	O-ring	1	Lubricate with grease Molykote PG54	
3	2760260	Plug	2	1/4" G	Loxéal 55-14	42	2260070	Shutter	1	C=3Nm / Loxéal 55-14	
4	880581	Plug	1	1/4" G brass	C=15Nm / Loxéal 55-14	43	2760980	Seat	1		
5	820510	O-ring	1	Ø 10,82x1,78		44	770140	O-ring	1	Lubricate with grease Molykote PG54	
6	2760180	Plug	3		C=50Nm / Loxéal 55-14	45	2760640	Ring	1	anti-extrusion	
7	1200690	O-ring	3	Ø 15,6x1,78	Lubricate with grease Molykote PG54	50	2760780	Pump body	1		
8	2769050	Complete valve	6			51	801080	Screw	8	C=10,4Nm	
9	2760230	Fitting	1	3/8" G (M)	C=40Nm / Loxéal 55-14	52	1381550	Washer	8		
10	394280	O-ring	1	Ø 12,42x1,78	Lubricate with grease Molykote PG54	53	880130	Oil plug	1	with oil dipstick	
11	2760270	O-ring	1	Ø 12x1	Lubricate with grease Molykote PG54	54	1980740	Plug	1	C=20Nm	
12	1470210	O-ring	1	Ø 9x1		55	740290	O-ring	1	Lubricate with grease Molykote PG54	
13	2760120	Injector	1	Ø 2,0		56	2760281	O-ring	1		
15	2760130	Shutter	1			57	802190	Screw	4	C=8Nm	
16	2101770	O-ring	1	Ø 4x2,5	90 Sh	58	2760040	Piston	3	Lubricate with grease Molykote PG54	
17	1982520	Hose tail	1	Ø 8	C=4Nm / Loxéal 55-14	59	1780050	Pin	3		
18	480480	O-ring	1	Ø 4,48x1,78		60	1780040	Connecting-rod	3	Lubricate with grease Molykote BR2 PLUS	
19	1250280	Ball	1			65	2760110	Cover	1		
20	1560520	Spring	1			75	1780490	Bearing	1		
21	2760220	Ring	3	support Ø 15		76	1780550	Ring	1	seeger Øe 20	
22	1342761	Water seal	3	Ø 15	Lubricate with grease Molykote PG54	77	1260790	Ring	1	seeger Øi 52	
23	1981580	Ring	3	anti-extrusion		78	1266740	Cover	1		
24	1981570	Piston guide	3	Ø 15	C=35Nm / Loxéal 55-14	85	2760770	Shaft	1	8 marked	
25	770260	O-ring	3	Ø 23,52x1,78		86	650250	Key	1		
26	1260440	Water seal	3	Ø 15	Lubricate with grease Molykote PG54	87	1321190	Bearing	1	Assemble with tool [1780610]	
27	640070	O-ring	3	Ø 13,95x2,62		88	1321080	Ring	1		
28	2760310	Spacer	3			89	1260750	Ring	1	seal	Assemble with tool [1941990]
29	1260460	Oil seal	3			A	2186	Valve kit	1		
30	1060120	Nut	1	M6		B	2187	Piston kit	1	Ø 15	
31	392840	Screw	1	M6x16		C	2192	Oil seal kit	1		
32	2760480	Insert	1			E	2189	Water seal kit	1	Ø 15	
33	1980220	Wobble plate	2			F	2190	Gasket kit	1		
34	2760410	Spring	1		Lubricate with grease Molykote BR2 PLUS	G	2191	Support ring kit	1	Ø 15	
35	2760400	Piston	1								
36	2260100	O-ring	1	Ø 6,02x2,62	Lubricate with grease Molykote PG54						
37	660190	O-ring	1	Ø 6,07x1,78	Lubricate with grease Molykote PG54						
38	2760210	Ring	1	anti-extrusion							
39	2760050	Piston guide	1		C=35Nm / Loxéal 55-14						

Revision: 1

Oil type: SAE 15W40

Validity: < XX/YY = From week/year

Date: 06/03/2026

Oil quantity: 0,300 Kg

C= Tightening torque (Tolerance +0 ÷ -10%)

* = Not present for electric pump