



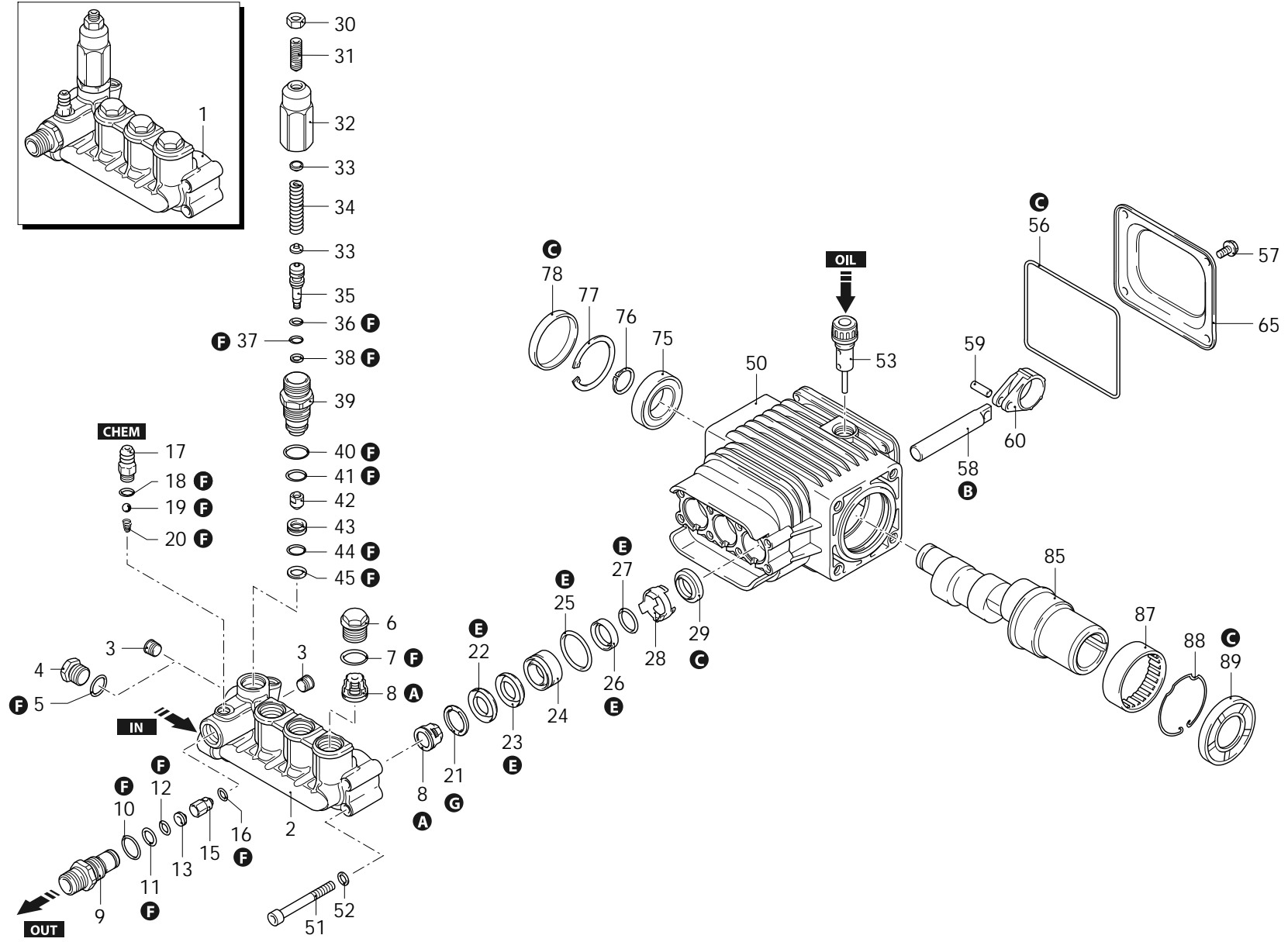
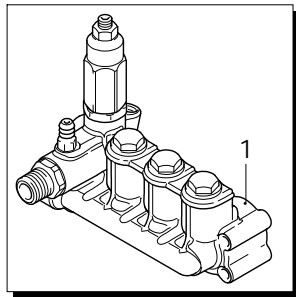
Series 276

RSV

D

3400rpm

ø 3/4"



AR_s276-03_v01

06/03/2026



Series 276

RSV

D

3400rpm

Ø 3/4"

P	Code	Description		Q	Assembly prescription	Validity	P	Code	Description		Q	Assembly prescription	Validity
1	2769236	Head assembly	Ø 15	1			40	1200690	O-ring	Ø 15,6x1,78	4	Lubricate with grease Molykote PG54	
2	2760330	Head	brass	1			41	394280	O-ring	Ø 12,4x1,78	2	Lubricate with grease Molykote PG54	
3	2760260	Plug	1/4" G	2	Loxéal 55-14		42	2260070	Shutter		1	C=3Nm / Loxéal 55-14	
4	880581	Plug	1/4" G brass	1	C=15Nm / Loxéal 55-14		43	2760980	Seat		1		
5	820510	O-ring	Ø 10,82x1,78	1			44	770140	O-ring	Ø 11,11x1,78	1	Lubricate with grease Molykote PG54	
6	2760180	Plug		3	C=50Nm / Loxéal 55-14		45	2760640	Ring	anti-extrusion	1		
7	1200690	O-ring	Ø 15,6x1,78	3	Lubricate with grease Molykote PG54		50	2760010	Pump body		1		
8	2769050	Complete valve		6			51	801080	Screw	TCEI M6x50	8	C=10,4Nm	
9	2760230	Fitting	3/8" G (M)	1	C=40Nm / Loxéal 55-14		52	1381550	Washer		8		
10	394280	O-ring	Ø 12,42x1,78	2	Lubricate with grease Molykote PG54		53	880130	Oil plug	with oil dipstick	1		
11	2760270	O-ring	Ø 12x1	1	Lubricate with grease Molykote PG54		56	2760281	O-ring		1		
12	1470210	O-ring	Ø 9x1	1			57	802190	Screw	TE 6x12	4	C=8Nm	
13	2760120	Injector	Ø 2,0	1			58	2760040	Piston	Ø 15	3	Lubricate with grease Molykote PG54	
15	2760130	Shutter		1			59	1780050	Pin		3		
16	2101770	O-ring	Ø 4x2,5	1	90 Sh		60	1780040	Connecting-rod	aluminium	3	Lubricate with grease Molykote BR2 PLUS	
17	1982520	Hose tail	Ø 8	1	C=4Nm / Loxéal 55-14		65	2760110	Cover		1		
18	480480	O-ring	Ø 4,48x1,78	1			75	1780490	Bearing		1		
19	1250280	Ball		1			76	1780550	Ring	seeger Øe 20	1		
20	1560520	Spring		1			77	1260790	Ring	seeger Øi 52	1		
21	2760220	Ring	support Ø 15	3			78	1266740	Cover		1		
22	1342761	Water seal	Ø 15	3	Lubricate with grease Molykote PG54		85	1780590	Shaft	9 marked	1		
23	1981580	Ring	anti-extrusion	3			87	1321190	Bearing		1	Assemble with tool [1780610]	
24	1981570	Piston guide	Ø 15	3	C=35Nm / Loxéal 55-14		88	1321080	Ring		1		
25	770260	O-ring	Ø 23,52x1,78	3			89	480671	Ring	seal	1	Assemble with tool [1781000]	
26	1260440	Water seal	Ø 15	3	Lubricate with grease Molykote PG54		A	2186	Valve kit		1		
27	640070	O-ring	Ø 13,95x2,62	3			B	2187	Piston kit	Ø 15	1		
28	2760310	Spacer		3			C	2188	Oil seal kit		1		
29	1260460	Oil seal		3			E	2189	Water seal kit	Ø 15	1		
30	1060120	Nut	M6	1			F	2190	Gasket kit		1		
31	392840	Screw	M6x16	1			G	2191	Support ring kit	Ø 15	1		
32	2760480	Insert		1									
33	1980220	Wobble plate		2									
34	2760410	Spring		1	Lubricate with grease Molykote BR2 PLUS								
35	2760400	Piston		1									
36	2260100	O-ring	Ø 6,02x2,62	1	Lubricate with grease Molykote PG54								
37	660190	O-ring	Ø 6,07x1,78	1	Lubricate with grease Molykote PG54								
38	2760210	Ring	anti-extrusion	1									
39	2760050	Piston guide		1	C=35Nm / Loxéal 55-14								

Revision: 1

Oil type: SAE 15W40

Validity: < XX/YY = From week/year

Date: 06/03/2026

Oil quantity: 0,300 Kg

C= Tightening torque (Tolerance +0 ÷ -10%)

* = Not present for electric pump

23473 - RSV 3 G25 D + F25



Series 276

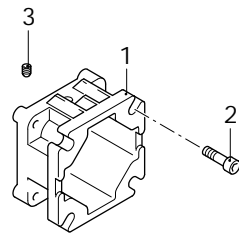
RSV

D

3400rpm

Ø 3/4"

P	Code	Description		Q	Assembly prescription	Validity
1	1780580	Flange	F25	1		
2	180030	Screw	TCEI M8x20	4	C=24,5Nm	
3	820440	Screw	M6x6	1		



F25

AR-1_flangia-14_v01

Revision: 1

Oil type: SAE 15W40

Validity: < XX/YY = From week/year

Date: 06/03/2026

Oil quantity: 0,300 Kg

C=Tightening torque (Tolerance +0 ÷ -10%)

23473 - RSV 3 G25 D + F25