



INTERPUMP GROUP

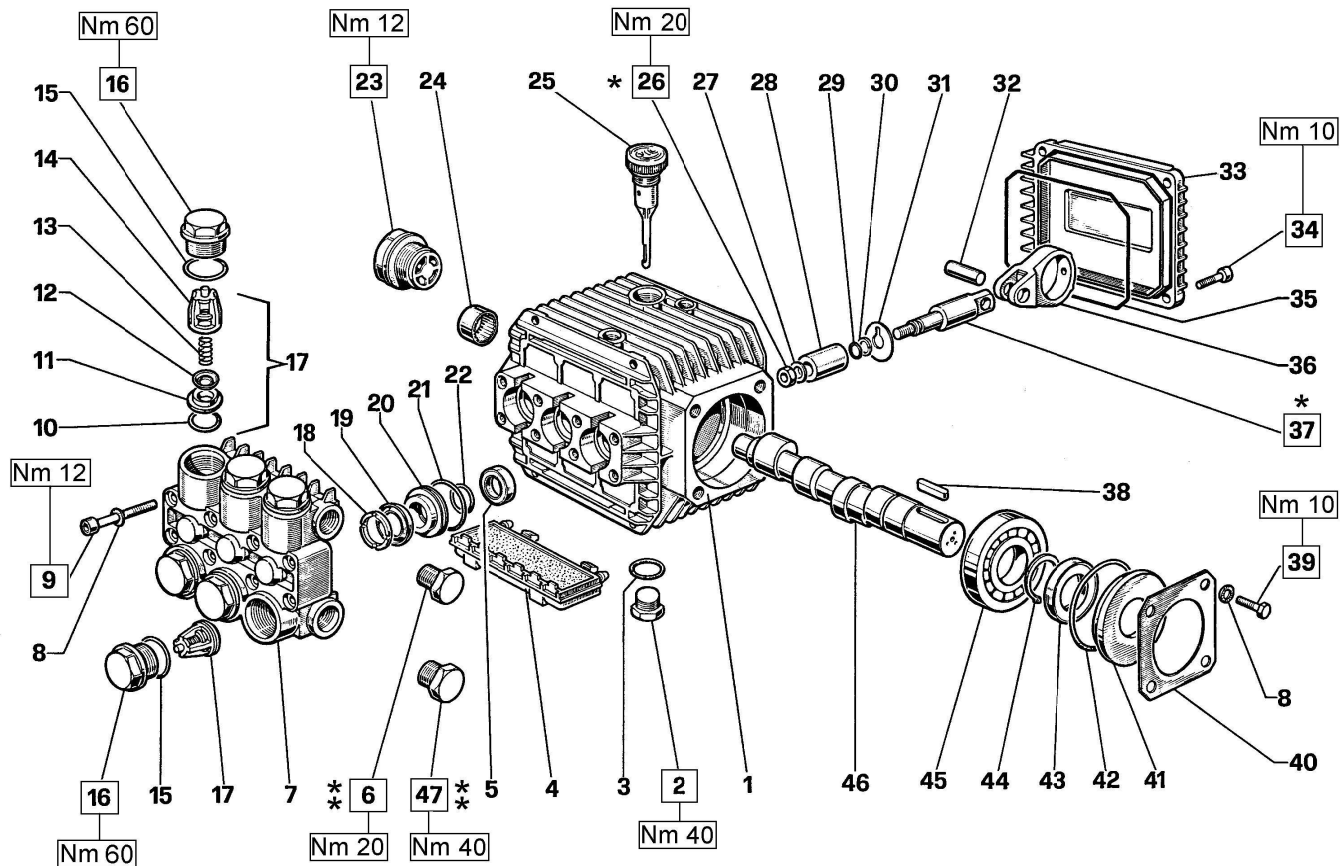


| | | | | | |
|---------|--|--------|--------------------------------------|--------|---|
| I GB | ISTRUZIONI D'USO INSTRUCTIONS FOR USE | F D | MODE D'EMPLOI BEDIENUNGSANLEITUNG | E P | INSTRUCCIONES DE USO INSTRUÇÕES DE USO |
|---------|--|--------|--------------------------------------|--------|---|

Questo manuale deve essere letto e compreso in accordo al libretto generico "Istruzioni d'uso e manutenzione".
 This manual must be read and followed in accordance with the generic "Instructions for Use and Maintenance" booklet.
 Ce manuel doit être lu et compris en accord avec la notice générale " Mode d'emploi et d'entretien ".
 Dieses Handbuch ist in Verbindung mit dem allgemeinen Handbuch " Gebrauchs- und Wartungsanleitung " zu lesen und zu verstehen.
 Este manual debe leerse y comprenderse de acuerdo con el manual general "Instrucciones de uso y mantenimiento".
 Este manual deve ser lido e interpretado de acordo com o livro genérico "Instruções de uso e manutenção".

| 51 | Type Type Type Tipo | Flow rate Débit Förderstrom Caudal Portata | | Pressure Pressione Druck Presion Pressione | | | rpm t/m upm r/m g/m | Power Puissance Leistung Potencia Potenza | | Weight Poids Gewicht Peso Massa | | |
|----------------------------|------------------------------|--|------|--|------|------|---------------------------------|---|------|---|------|-----|
| | | L/min | gpm | bar | MPa | psi | | Hp | kW | Kg | lbs | |
| S E R I E S | W1507 | 7 | 1.85 | 150 | 15 | 2175 | 1450 | 3 | 2.20 | 5.2 | 11.4 | 0.3 |
| | W1208 | 8 | 2.11 | 120 | 12 | 1750 | 1450 | 2.5 | 1.83 | 5.2 | 11.4 | 0.3 |
| | W1210 | 10 | 2.64 | 120 | 12 | 1750 | 1450 | 3 | 2.20 | 5.2 | 11.4 | 0.3 |
| | W905 T9051 | 8 | 2.11 | 70 | 7 | 1015 | 1750 | 1.5 | 1.10 | 5.2 | 11.4 | 0.3 |
| | T1508 | 8 | 2.11 | 150 | 15 | 2175 | 1750 | 3 | 2.20 | 5.2 | 11.4 | 0.3 |
| | T1209 | 9 | 2.38 | 120 | 12 | 1750 | 1750 | 3 | 2.20 | 5.2 | 11.4 | 0.3 |
| | T1212 | 12 | 3.17 | 120 | 12 | 1750 | 1750 | 4 | 2.94 | 5.2 | 11.4 | 0.3 |
| | WW55 TT551 | 8 | 2.11 | 50 | 5 | 725 | 2800 | 1 | 0.73 | 5.2 | 11.4 | 0.3 |
| | WW74 TT741 | 8 | 2.11 | 70 | 7 | 1015 | 2800 | 1.5 | 1.10 | 5.2 | 11.4 | 0.3 |
| | WW90 TT901 | 8 | 2.11 | 90 | 9 | 1300 | 2800 | 2 | 1.47 | 5.2 | 11.4 | 0.3 |
| | WW1508 | 8 | 2.11 | 150 | 15 | 2175 | 2800 | 3 | 2.20 | 5.2 | 11.4 | 0.3 |
| | WW1509 | 9 | 2.38 | 150 | 15 | 2175 | 2800 | 3.5 | 2.57 | 5.2 | 11.4 | 0.3 |
| | WW95 TT951 | 9.5 | 2.50 | 100 | 10 | 1450 | 2800 | 2.5 | 1.83 | 5.2 | 11.4 | 0.3 |
| | WW1510 | 10 | 2.64 | 150 | 15 | 2175 | 2800 | 4 | 2.94 | 5.2 | 11.4 | 0.3 |
| | WW56 TT561 | 11 | 2.90 | 50 | 5 | 725 | 2800 | 1.5 | 1.10 | 5.2 | 11.4 | 0.3 |
| WW75 TT751 | 11 | 2.90 | 70 | 7 | 1015 | 2800 | 2 | 1.47 | 5.2 | 11.4 | 0.3 | |
| WW93 TT931 | 11 | 2.90 | 90 | 9 | 1300 | 2800 | 2.5 | 1.83 | 5.2 | 11.4 | 0.3 | |
| WW1511 | 11 | 2.90 | 150 | 15 | 2175 | 2800 | 4.5 | 3.30 | 5.2 | 11.4 | 0.3 | |
| WW94 TT941 | 13 | 3.43 | 90 | 9 | 1300 | 2800 | 3 | 2.20 | 5.2 | 11.4 | 0.3 | |
| WW1513 | 13 | 3.43 | 150 | 15 | 2175 | 2800 | 5 | 3.67 | 5.2 | 11.4 | 0.3 | |
| WW906 TT9061 | 8 | 2.11 | 70 | 7 | 1015 | 3400 | 1.5 | 1.10 | 5.2 | 11.4 | 0.3 | |
| TT1508 | 8 | 2.11 | 150 | 15 | 2175 | 3400 | 3 | 2.20 | 5.2 | 11.4 | 0.3 | |
| TT1510 | 10 | 2.64 | 150 | 15 | 2175 | 3400 | 4 | 2.94 | 5.2 | 11.4 | 0.3 | |
| WW907 TT9071 | 10.6 | 2.80 | 55 | 5.5 | 800 | 3400 | 1.5 | 1.10 | 5.2 | 11.4 | 0.3 | |
| TT1511 | 11 | 2.90 | 150 | 15 | 2175 | 3400 | 4 | 2.94 | 5.2 | 11.4 | 0.3 | |
| TT1512 | 12 | 3.17 | 150 | 15 | 2175 | 3400 | 4.5 | 3.30 | 5.2 | 11.4 | 0.3 | |
| WW909 TT9091 | 13 | 3.43 | 100 | 10 | 1450 | 3400 | 3.5 | 2.57 | 5.2 | 11.4 | 0.3 | |
| TT1513 | 13 | 3.43 | 150 | 15 | 2175 | 3400 | 5 | 3.67 | 5.2 | 11.4 | 0.3 | |





* Fissare con Loctite 270 col. VERDE
 * Affix with Loctite 270 col. GREEN
 * Fixer avec de la Loctite 270 couleur VERT
 * Mit Loctite 270 GRÜN befestigen
 * Fijar con Loctite 270 col. VERDE
 * Fixar com Loctite 270 cor. VERDE

** Fissare con Loctite 542 col. ROSSO
 ** Affix with Loctite 542 col. RED
 ** Fixer avec de la Loctite 542 couleur ROUGE
 ** Mit Loctite 542 ROT befestigen
 ** Fijar con Loctite 542 col. ROJO
 ** Fixar com Loctite 542 cor. VERMELHA

**KIT RICAMBI – SPARE KITS****PISTONE - PISTON Ø15**

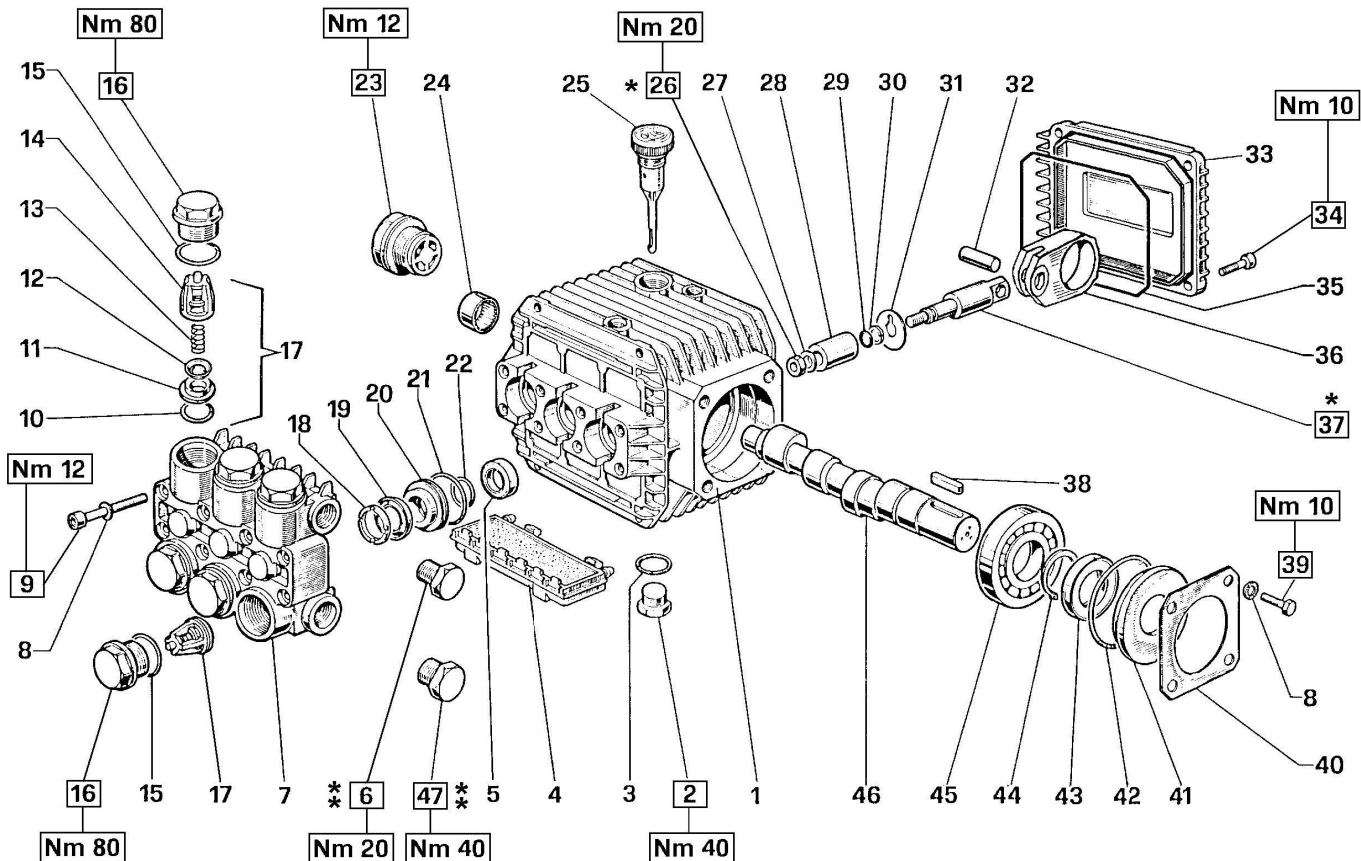
WW55 – WW56 – WW74 – WW75
WW90 – WW93 – WW94 – WW95
TT551 – TT561 – TT741 – TT751
TT901 – TT931 – TT941 – TT951

| KIT Nr. | KIT 1 | KIT 83 | KIT 84 | KIT 86 | KIT 96 | KIT 97 |
|---|----------------------------------|--------|---------|---------------|--------------------------|--------------------|
| Posizioni include Positions included | 10 – 11 12 – 13 14 (17) | 5 | 15 - 16 | 20 - 21 22 | 18 – 19 20 – 21 22 | 18 – 19 21 - 22 |
| Nr. Pcs. | 6 | 3 | 6 | 3 | 1 | 3 |

| POS | COD. | DESCRIZIONE – DESCRIPTION - KIT | NR |
|-----|--------------------------|---------------------------------------|------------|
| 1 | 51.0106.22 | Carter pompa | 1 |
| 2 | 98.2100.50 | Tappo G 3/8"x13 TE22 Zinc. | 1 |
| 3 | 90.3833.00 | OR Ø 13.95x2.62 (3056) | 2 |
| 4 | 51.2090.51 | Protezione | 1 |
| 5 | 90.1565.00 | Anello rad. Ø 15x24x5 | 83 3 |
| 6 | 98.2041.00 | Tappo G 1/4"x9 | 2 |
| 7 | 51.1200.41 51.1200.22 | Testata Ø 15 Testata Ø 15 - NICKEL | 1 |
| 8 | 96.6938.00 | Rondella Ø 6.4x10x0.7 | 8 |
| 9 | 99.1943.00 | Vite M6x40 UNI 5931 | 8 |
| 10 | 90.3841.00 | OR Ø 17.13x2.62 (3068) | 1 6 |
| 11 | 36.2003.66 | Sede valvola | 1 6 |
| 12 | 36.2001.76 | Valvola sferica | 1 6 |
| 13 | 94.7376.00 | Molla Ø 9.4x14.8 | 1 6 |
| 14 | 36.2002.51 | Guida valvola123 | 1 6 |
| 15 | 90.3847.00 | OR Ø 20.24x2.62 (3081) | 84 6 |
| 16 | 98.2218.00 | Tappo M24x1.5x11 | 84 6 |
| 17 | 36.7032.01 | Gruppo valvola aspiraz. / mand. | 1 6 |
| 18 | 51.1000.51 | Anello di testa Ø 15 | 96-97 3 |
| 19 | 90.2620.00 | Anello ten. alt. Ø 15x25x5/3.1 | 96-97 3 |
| 20 | 51.0800.70 | Anello di fondo Ø 15 | 86-96 3 |
| 21 | 90.3604.00 | OR Ø 25.12x1.78 (2100) | 86-96-97 3 |

| POS | COD. | DESCRIZIONE – DESCRIPTION - KIT | NR |
|-----|------------|---------------------------------|------------|
| 22 | 90.3835.00 | OR Ø 15.08x2.62 (119) | 86-96-97 3 |
| 23 | 97.5968.00 | Spia livello olio | 1 |
| 24 | 91.8014.00 | Boccola a rullini | 1 |
| 25 | 98.2103.00 | Tappo carico olio | 1 |
| 26 | 92.2216.00 | Dado M8x13x5 – INOX | 3 |
| 27 | 44.2115.70 | Rosetta Ø 8 con collare | 3 |
| 28 | 51.0400.09 | Pistone Ø 15x25 | 3 |
| 29 | 90.3573.00 | OR Ø 5.28x1.78 (2021) | 3 |
| 30 | 90.5022.00 | Anello antiest. Ø 6.2x9x1.5 | 3 |
| 31 | 96.7070.00 | Rosetta Ø 9x23x0.5 | 3 |
| 32 | 97.7310.00 | Spinotto Ø 8x24.5 | 3 |
| 33 | 51.1600.22 | Coperchio posteriore | 1 |
| 34 | 99.1867.00 | Vite M6x18 UNI 5931 | 4 |
| 35 | 90.3917.00 | OR Ø 88.57x2.62 (3350) | 1 |
| 36 | 51.0300.22 | Biella | 3 |
| 37 | 51.0500.56 | Guida pistone | 3 |
| 38 | 91.4877.00 | Linguetta 8x7x25 UNI 6604 | 1 |
| 39 | 99.1807.00 | Vite M6x10 UNI 5937 | 4 |
| 40 | 50.1500.74 | Coperchio carter | 1 |
| 41 | 50.2115.51 | Distanziale | 1 |
| 42 | 90.4097.00 | OR Ø 55.56x3.53 (159) | 1 |
| 43 | 90.1634.00 | Anello rad. Ø 25x42x7 | 1 |

| POS | COD. | DESCRIZIONE – DESCRIPTION - KIT | NR |
|-----|--|--|----|
| 44 | 90.0635.00 | Anello seeger Ø 25 | 1 |
| 45 | 91.8328.00 | Cuscinetto a sfere 6305 | 1 |
| 46 | 51.0217.65 51.0204.65 51.0200.65 51.0201.65 | Albero C.7.2 - WW95 TT951 Albero C.9.4 - WW94 TT941 Albero C.6 - WW55 WW74 WW90 TT551 TT741 TT901 Albero C.8 - WW56 WW75 WW93 TT561 TT751 TT931 | 1 |
| 47 | 98.2100.00 | Tappo G 3/8"x13 | 1 |



* Fissare con Loctite 270 col. VERDE
 * Affix with Loctite 270 col. GREEN
 * Fixer avec de la Loctite 270 couleur VERT
 * Mit Loctite 270 GRÜN befestigen
 * Fijar con Loctite 270 col. VERDE
 * Fixar com Loctite 270 cor. VERDE

** Fissare con Loctite 542 col. ROSSO
 ** Affix with Loctite 542 col. RED
 ** Fixer avec de la Loctite 542 couleur ROUGE
 ** Mit Loctite 542 ROT befestigen
 ** Fijar con Loctite 542 col. ROJO
 ** Fixar com Loctite 542 cor. VERMELHA

**KIT RICAMBI – SPARE KITS****PISTONE - PISTON Ø15****PISTONE - PISTON Ø18**

| KIT Nr. | KIT 83 | KIT 123 | KIT 157 | KIT 86 | KIT 96 | KIT 97 | KIT 139 | KIT 140 | KIT 141 |
|---|--------|----------------------------------|---------|---------------|--------------------------|--------------------|---------------|--------------------------|--------------------|
| Posizioni include Positions included | 5 | 10 – 11 12 – 13 14 (17) | 15 - 16 | 20 - 21 22 | 18 – 19 20 – 21 22 | 18 – 19 21 - 22 | 20 - 21 22 | 18 – 19 20 – 21 22 | 18 – 19 21 – 22 |
| Nr. Pcs. | 3 | 6 | 6 | 3 | 1 | 3 | 3 | 1 | 3 |

**W1507 – WW1508 – WW1509 – WW1510
WW1511 – WW1513 – W1208 – W1210
T1508 – TT1508 – TT1510 – TT1511
TT1512 – TT1513 – TT1209 – T1212**

PISTONE - PISTON Ø 15**PISTONE - PISTON Ø 18**

**W1507 – WW1508 - WW1509
WW1510 - WW1511
WW1513
T1508 – TT1508 – TT1510
TT1511 – TT1512 – TT1513**

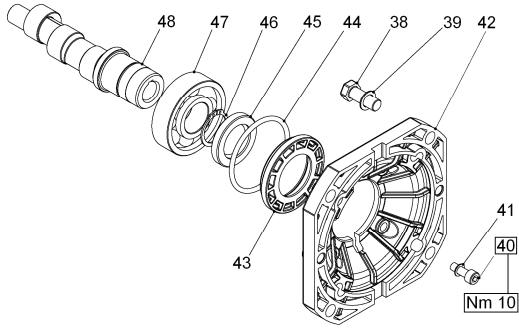
**W1208 – W1210
T1209 – T1212**

| POS | COD. | DESCRIZIONE – DESCRIPTION - KIT | NR | POS | COD. | DESCRIZIONE – DESCRIPTION - KIT | NR |
|-----|--------------------------|--|---------------------------|------------|------------------------------|--|----|
| 17 | 36.7115.01 | Gruppo valvola aspiraz. / mand. | 123 6 | 36 | 51.0301.22 | Biella | 3 |
| 18 | 51.1000.51 51.1001.51 | Anello di testa Ø 15 Anello di testa Ø 18 | 96-97 140-141 3 | 37 | 51.0500.56 | Guida pistone | 3 |
| 19 | 90.2620.00 90.2681.00 | Anello ten. alt. Ø 15x25x5/3.1 Anello ten. alt. Ø 18x26x5/3 | 96-97 140-141 3 | 38 | 91.4877.00 | Linguetta 8x7x25 UNI 6604 | 1 |
| 20 | 51.0800.70 51.0803.70 | Anello di fondo Ø 15 Anello di fondo Ø 18 | 86-96 139-140 3 | 39 | 99.1807.00 | Vite M6x10 UNI 5937 | 4 |
| 21 | 90.3604.00 | OR Ø 25.12x1.78 (2100) 139-140-141 | 86-96-97 3 | 40 | 50.1500.74 | Coperchio carter | 1 |
| 22 | 90.3835.00 90.3843.00 | OR Ø 15.08x2.62 (119) OR Ø 17.86x2.62 (123) | 86-96-97 139-140-141 3 | 41 | 50.2115.51 | Distanziale | 1 |
| 23 | 97.5968.00 | Spia livello olio | 1 | 42 | 90.4097.00 | OR Ø 55.56x3.53 (159) | 1 |
| 24 | 91.8014.00 | Boccola a rullini | 1 | 43 | 90.1634.00 | Anello rad. Ø 25x42x7 | 1 |
| 25 | 98.2103.00 | Tappo carico olio | 1 | 44 | 90.0635.00 | Anello seeger Ø 25 | 1 |
| 26 | 92.2216.00 | Dado M8x13x5 – INOX | 3 | 45 | 91.8328.00 | Cuscinetto a sfere 6305 | 1 |
| 27 | 44.2115.70 | Rosetta Ø 8 con collare | 3 | 46 | 51.0217.65 | Albero C.7.2 - W1208 WW1510 T1209 TT1512 | 1 |
| 28 | 51.0400.09 51.0401.09 | Pistone Ø 15x25 Pistone Ø 18x25 | 3 | | 51.0204.65 | Albero C.9.4 - W1210 W1507 WW1513 T1210 T1508 | |
| 29 | 90.3573.00 | OR Ø 5.28x1.78 (2021) | 3 | | 51.0200.65 | Albero C.6 - WW1508 TT1510 | |
| 30 | 90.5022.00 | Anello antiest. Ø 6.2x9x1.5 | 3 | | 51.0201.65 | Albero C.8 - WW1511 TT1513 | |
| 31 | 96.7070.00 | Rosetta Ø 9x23x0.5 | 3 | 51.0206.65 | Albero C.6.6 - WW1509 TT1511 | 1 | |
| 32 | 97.7310.00 | Spinotto Ø 8x24.5 | 3 | 51.0224.65 | Albero C.5 - TT1508 | | |
| 33 | 51.1600.22 | Coperchio posteriore | 1 | 47 | 98.2100.00 | Tappo G 3/8"x13 | 1 |
| 34 | 99.1867.00 | Vite M6x18 UNI 5931 | 4 | | | | |
| 35 | 90.3917.00 | OR Ø 88.57x2.62 (3350) | 1 | | | | |

| POS | COD. | DESCRIZIONE – DESCRIPTION - KIT | NR |
|-----|--------------------------|---------------------------------|-------|
| 1 | 51.0106.22 | Carter pompa | 1 |
| 2 | 98.2100.50 | Tappo G 3/8"x13 TE Zinc. | 1 |
| 3 | 90.3833.00 | OR Ø 13.95x2.62 (3056) | 2 |
| 4 | 51.2090.51 | Protezione | 1 |
| 5 | 90.1565.00 | Anello rad. Ø 15x24x5 | 83 3 |
| 6 | 98.2041.00 | Tappo G 1/4"x9 | 2 |
| 7 | 51.1200.41 51.1204.41 | Testata Ø 15 Testata Ø 18 | 1 |
| 8 | 96.6938.00 | Rondella Ø 6.4x10x0.7 | 8 |
| 9 | 99.1943.00 | Vite M6x40 UNI 5931 | 8 |
| 10 | 90.3841.00 | OR Ø 17.13x2.62 (3068) | 123 6 |
| 11 | 36.2003.66 | Sede valvola | 123 6 |
| 12 | 36.2001.76 | Valvola sferica | 123 6 |
| 13 | 94.7376.00 | Molla Ø 9.4x14.8 | 123 6 |
| 14 | 36.2025.51 | Guida valvola | 123 6 |
| 15 | 90.3847.00 | OR Ø 20.24x2.62 (3081) | 157 6 |
| 16 | 98.2216.00 | Tappo M24x1.5x11.2 | 157 6 |

VERSION A (for electric motors NEMA 56 C)

**W905 – WW906 – WW907
T9051 – TT9061 – TT9071
T1209 – T1212 – T1508**

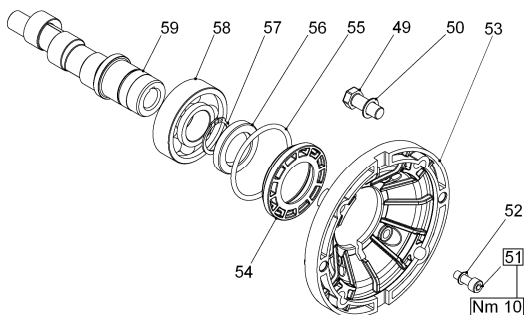


DIS. COD. 51.9517.00

| POS | COD. | DESCRIZIONE - DESCRIPTION | NR |
|-----|--|---|----|
| 38 | 99.3345.00 | Vite 3/8"x16 | 4 |
| 39 | 96.7104.00 | Rosetta Ø 10,5x16x1 | 4 |
| 40 | 99.1867.00 | Vite M6x18 UNI 5931 | 4 |
| 41 | 96.6938.00 | Rosetta Ø 6.4x10x0.7 | 4 |
| 42 | 10.0344.22 | Flangia per motore elettrico | 1 |
| 43 | 50.2115.51 | Distanziale | 1 |
| 44 | 90.4097.00 | OR Ø 55.56x3.53 (159) | 1 |
| 45 | 90.1644.00 | Anello rad. Ø 30x42x7 | 1 |
| 46 | 90.0667.00 | Anello di fermo albero Ø 30 | 1 |
| 47 | 91.8373.00 | Cuscinetto a sfere 6206 | 1 |
| 48 | 51.0208.65 51.0209.65 51.0215.65 51.0225.65 | Albero C.5 – WW906 TT9061 Albero C.6.6 – WW907 TT9071 Albero C.9.4 – W905 T9051 T1212 T1508 Albero C.7.2 – T1209 | 1 |

VERSION B (for electric motors IEC 90 B14)

**WW55 – WW56 – WW74 – WW75
WW90 – WW93 – WW94 – WW95
W1208 – W1210 – W1507 – WW1508
WW1510 – WW1511 – WW1513 – TT551
TT561 – TT741 – TT751 – TT901 – TT931
TT941 – TT951**

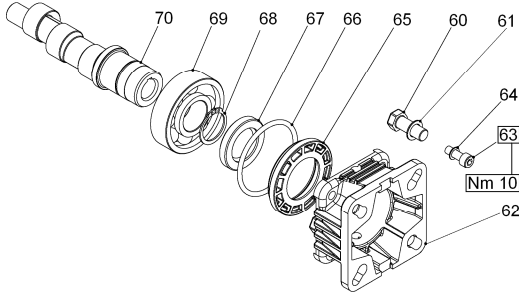


DIS. COD. 51.9518.00

| POS | COD. | DESCRIZIONE - DESCRIPTION | NR |
|-----|--|--|----|
| 49 | 99.3067.00 | Vite M8x25 UNI 5739 | 4 |
| 50 | 96.7014.00 | Rosetta Ø 8.4x13x0.8 | 4 |
| 51 | 99.1867.00 | Vite M6x18 UNI 5931 | 4 |
| 52 | 96.6938.00 | Rosetta Ø 6.4x10x0.7 | 4 |
| 53 | 10.0345.22 | Flangia per motore elettrico | 1 |
| 54 | 50.2115.51 | Distanziale | 1 |
| 55 | 90.4097.00 | OR Ø 55.56x3.53 (159) | 1 |
| 56 | 90.1644.00 | Anello rad. Ø 30x42x7 | 1 |
| 57 | 90.0667.00 | Anello di fermo Ø 30 | 1 |
| 58 | 91.8373.00 | Cuscinetto a sfere 6206 | 1 |
| 59 | 51.0212.65 51.0213.65 51.0214.65 51.0216.65 | Albero C.6 – WW55 WW74 WW90 TT551 TT741 TT901 WW1508 Albero C.8 – WW56 WW75 WW93 TT561 TT751 TT631 WW1511 Albero C.9.4 – WW94 TT941 W1210 W1507 WW1513 Albero C.7.2 – WW95 TT951 W1208 WW1510 | 1 |

VERSION C (for gasoline engines SAE J 609 type A ext.3)

**WW906 – WW907 – WW909
TT9061 – TT9071 – TT9091 - TT1508
TT1510 – TT1511 – TT1512 – TT1513**

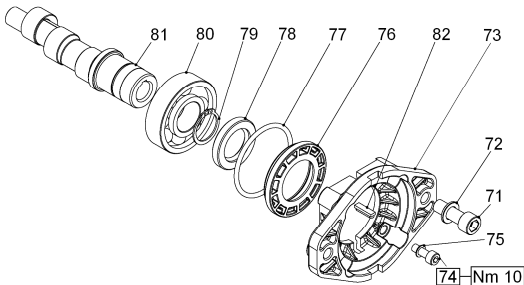


DIS. COD. 51.9519.00

| POS | COD. | DESCRIZIONE - DESCRIPTION | NR |
|-----|--|---|----|
| 60 | 99.2730.00 | Vite 5/16"x3/4"x24 | 4 |
| 61 | 96.7014.00 | Rosetta Ø 8.4x13x0.8 | 4 |
| 62 | 10.0346.22 | Flangia per motore a scoppio | 1 |
| 63 | 99.1867.00 | Vite M6x18 UNI 5931 | 4 |
| 64 | 96.6938.00 | Rosetta Ø 6.4x10x0.7 | 4 |
| 65 | 50.2115.51 | Distanziale | 1 |
| 66 | 90.4097.00 | OR Ø 55.56x3.53 (159) | 1 |
| 67 | 90.1644.00 | Anello rad. Ø 30x42x7 | 1 |
| 68 | 90.0667.00 | Anello di fermo albero Ø 30 | 1 |
| 69 | 91.8373.00 | Cuscinetto a sfere 6206 | 1 |
| 70 | 51.0210.65 51.0211.65 51.0218.65 51.0223.65 51.0221.65 | Albero C.5 - WW906 TT9061 TT1508 Albero C.6.6 - WW907 TT9071 TT1511 Albero C.8 - WW909 TT9091 TT1513 Albero C.6 - TT1510 Albero C.7.2 - TT1512 | 1 |

VERSION I (for hydraulic motors SAE J 744 type A – 5/8")

WW1513



DIS. COD. 51.9585.00

| POS | COD. | DESCRIZIONE - DESCRIPTION | NR |
|-----|------------|------------------------------|----|
| 71 | 99.3686.00 | Vite M10x30 UNI 5931 | 2 |
| 72 | 96.7103.00 | Rosetta Ø 10.5x18x2 | 2 |
| 73 | 10.0763.22 | Flangia per motore idraulico | 1 |
| 74 | 99.1867.00 | Vite M 6x18 UNI 5931 | 4 |
| 75 | 96.6938.00 | Rosetta Ø 6.4x10x0.7 | 4 |
| 76 | 50.2115.51 | Distanziale | 1 |
| 77 | 90.4097.00 | OR Ø 55.56x3.53 (159) | 1 |
| 78 | 90.1644.00 | Anello rad. Ø 30x42x7 | 1 |
| 79 | 90.0667.00 | Anello di fermo albero Ø 30 | 1 |
| 80 | 91.8373.00 | Cuscinetto a sfere 6206 | 1 |
| 81 | 51.0215.65 | Albero C.9.4 - WW1513 | 1 |
| 82 | 91.4685.00 | Linguetta 4/4.8x18 | 1 |

VH VERSION

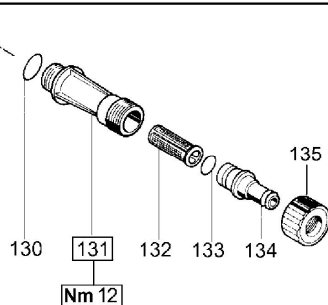
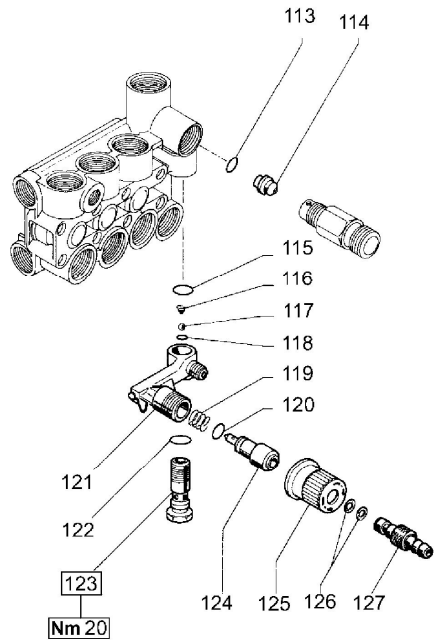
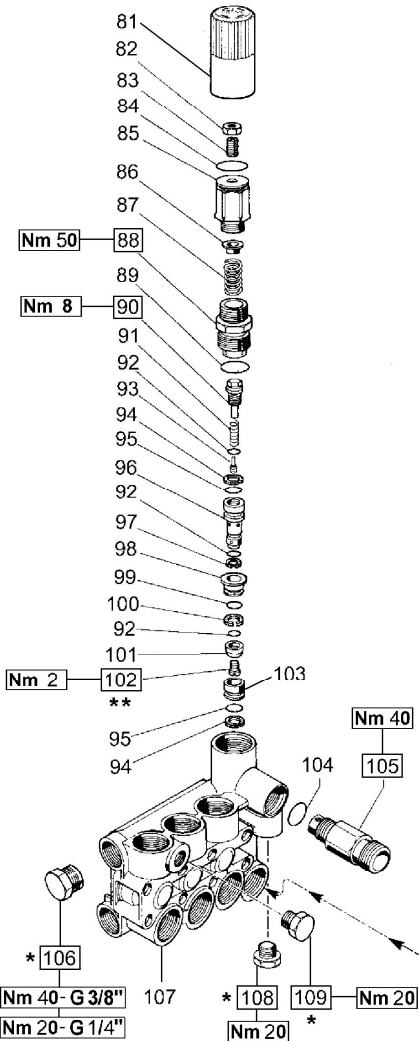
VERSIONE CON VALVOLA DI REGOLAZIONE AUT. – VERSION WITH BUILT-IN AUT. UNLOADER
 VERSION AVEC RÉGULATEUR AUT. DE PRESSION INCORPORÉ
 AUSFÜHRUNG MIT EINGEBAUTEM AUT. DRUCKREGULIERVENTIL

VERSIÓN CON REGULADOR AUT. DE PRESIÓN INCORPORADO - VERSÃO COM VÁLVULA DO REGULAMENTO AUT.

- * Fissare con Loctite 542 col. ROSSO
- * Affix with Loctite 542 col. RED
- * Fixer avec de la Loctite 542 couleur ROUGE
- * Mit Loctite 542 ROT befestigen
- * Fijar con Loctite 542 col. ROJO
- * Fixar com Loctite 542 cor. VERMELHA

- ** Fissare con Loctite 270 col. VERDE
- ** Affix with Loctite 270 col. GREEN
- ** Fixer avec de la Loctite 270 couleur VERT
- ** Mit Loctite 270 GRÜN befestigen
- ** Fijar con Loctite 270 col. VERDE
- ** Fixar com Loctite 270 cor. VERDE

OPTIONALS



DIS. COD. 51.9571.00

VH VERSION

**VERSIONE CON VALVOLA DI REGOLAZIONE AUT. – VERSION WITH BUILT-IN AUT. UNLOADER
VERSION AVEC RÉGULATEUR AUT. DE PRESSION INCORPORÉ
AUSFÜHRUNG MIT EINGEBAUTEM AUT. DRUCKREGULIERVENTIL
VERSIÓN CON REGULADOR AUT. DE PRESIÓN INCORPORADO - VERSÃO COM VÁLVULA DO REGULAMENTO AUT.**

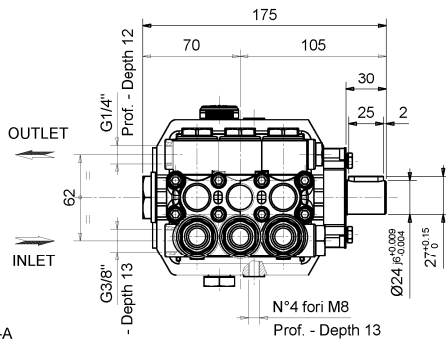
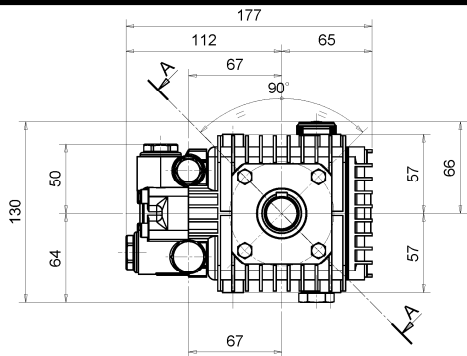
| POS | COD. | DESCRIZIONE – DESCRIPTION - KIT | N |
|-----|--|--|-------------|
| 81 | 36.3187.51 | Pomolo | 1 |
| 82 | 92.2218.00 | Dado M8x13 UNI 5589 | 1 |
| 83 | 99.3054.00 | Vite M8x20 UNI 5923 | 1 |
| 84 | 90.3598.00 | OR Ø 20.35x1.78 (2081) | 1 |
| 85 | 36.3185.70 | Registro pressione | 1 |
| 86 | 36.3169.70 | Piattello molla | 1 |
| 87 | 94.7436.00 | Molla Ø 15x35 | 1 |
| 88 | 36.3184.70 | Boccola di guida 102 | 1 |
| 89 | 90.3847.00 | OR Ø 20.24x2.62 (3081) – 90 Sh. 102 | 1 |
| 90 | 36.3188.70 | Fine corsa 102 | 1 |
| 91 | 94.7332.00 | Molla Ø 6.1x19 102 | 1 |
| 92 | 90.3575.00 | OR Ø 6.75x1.78 (106) 102 | 3 |
| 93 | 36.3331.51 | Otturatore 102 | 1 |
| 94 | 90.5065.00 | Anello antiest. Ø 10.6x15x2 102 | 2 |
| 95 | 90.3822.00 | OR Ø 9.92x2.62 (112) 102 | 2 |
| 96 | 36.3189.70 | Pistoncino di comando 102 | 1 |
| 97 | 90.5025.00 | Anello antiest. Ø 7x10x1.5 102 | 1 |
| 98 | 36.3165.70 | Guida valvola 102 | 1 |
| 99 | 90.3589.00 | OR Ø 12.42x1.78 (2050) 102 | 1 |
| 100 | 90.5075.00 | Anello antiest. Ø 13x16x1.5 102 | 1 |
| 101 | 36.3190.66 | Valvola sferica 102 | 1 |
| 102 | 99.1509.00 | Vite M5x0.8x8.5 102 | 1 |
| 103 | 36.3164.66 | Sede valvola 102 | 1 |
| 104 | 90.3832.00 | OR Ø 13.95x2.62 (3056) 94 | 1 |
| 105 | 10.0147.70 10.0078.70 10.0318.70 | Nipplo M22x1.5 con Ø 3 Nipplo G 3/8" con Ø 3 Nipplo 3/8" NPT con Ø 3 - USA | 1 1 1 |
| 106 | 98.2041.00 | Tappo G 1/4"x9 | 1 |
| 107 | 51.1201.41 51.1205.41 | Testata Ø 15 Testata Ø 18 | 1 1 |
| 108 | 98.2057.00 | Tappo M14x1.5 | 1 |
| 109 | 98.2041.00 | Tappo G 1/4"x9 | 1 |

| OPTIONALS | | | |
|-----------|--|--|-------------|
| POS | COD. | DESCRIZIONE – DESCRIPTION - KIT | N |
| 113 | 90.3822.00 | OR Ø 9.92x2.62 (112) | 94 1 |
| 114 | 10.0437.70 10.0151.66 10.0076.66 | Ugello D. 1.6 (<8 l/min.) Ugello D. 2 (8-11 l/min.) Ugello D. 2.2 (12-15 l/min.) | 1 1 1 |
| 115 | 90.3582.00 | OR Ø 9.25x1.78 (2037) | 94 1 |
| 116 | 94.8217.00 | Molla conica Ø 4.3/7.6x11 | 94 1 |
| 117 | 97.4782.00 | Sfera Ø 7/32" | 94 1 |
| 118 | 90.3572.00 | OR Ø 5.28x1.78 (2021) | 94 1 |
| 119 | 94.7383.00 | Molla Ø 9.75x10 | 94 1 |
| 120 | 90.3580.00 | OR Ø 8.73x1.78 (108) | 94 1 |
| 121 | 36.3181.51 | Corpo dosatore | 1 |
| 122 | 90.3585.00 | OR Ø 10.82x1.78 (2043) | 94 1 |
| 123 | 36.2563.70 | Sede valvola | 1 |
| 124 | 36.2564.70 | Otturatore | 1 |
| 125 | 36.2565.51 | Pomolo | 1 |
| 126 | 90.3570.00 | OR Ø 4.48x1.78 (2018) | 94 2 |
| 127 | 36.2566.70 | Innesto portagomma | 1 |
| 130 | 90.3841.00 | OR Ø 17.13x2.62 (3068) | 1 |
| 131 | 36.3182.51 | Nipplo aspirazione G 3/4" | 1 |
| 132 | 92.8925.00 | Filtro | 1 |
| 133 | 90.3828.00 | OR Ø 12.37x2.62 (3050) | 1 |
| 134 | 36.2569.70 | Portagomma aspirazione | 1 |
| 135 | 92.9828.00 | Ghiera G 3/4" | 1 |

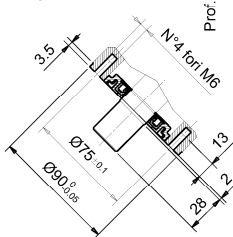
KIT RICAMBI – SPARE KITS

| KIT NR. | KIT 94 | KIT 102 |
|---------------------------|------------------------|---------------------|
| Posizioni include | 104 – 113 – 115 | 88 – 89 – 90 |
| Positions included | 116 – 117 – 118 | 91 – 92 – 93 |
| | 119 – 120 – 122 | 94 – 95 – 96 |
| | 126 | 97 – 98 – 99 |
| | | 100 – 101 |
| | | 102 – 103 |
| Nr. Pcs. | 1 – 2 | 1 - 3 |

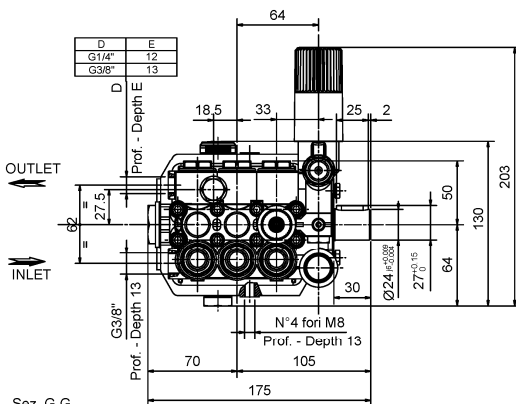
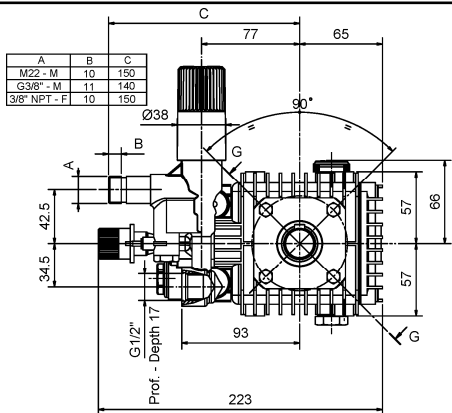
**DIMENSIONI D'INGOMBRO – OVERALL DIMENSIONS – DIMENSIÕES D'ENCOMBRAMENTO
RAUMBEDARF – DIMENSIONES TOTALES – DIMENSÕES**



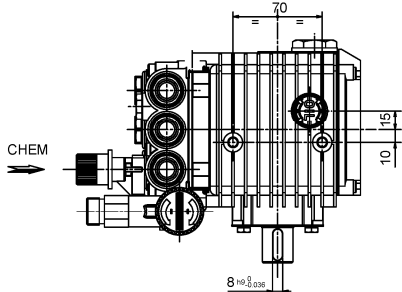
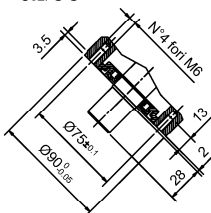
Sez. A-A



COD. DIS. 51.2145.00



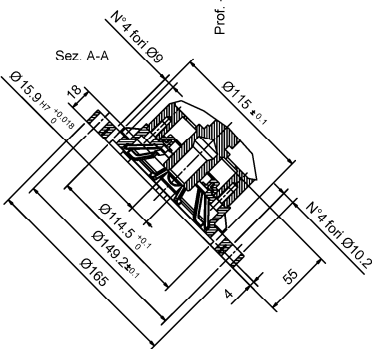
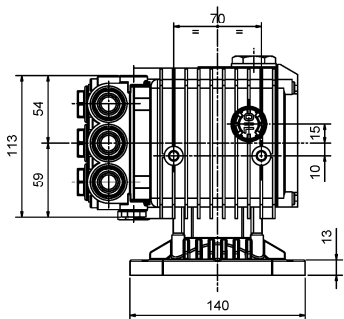
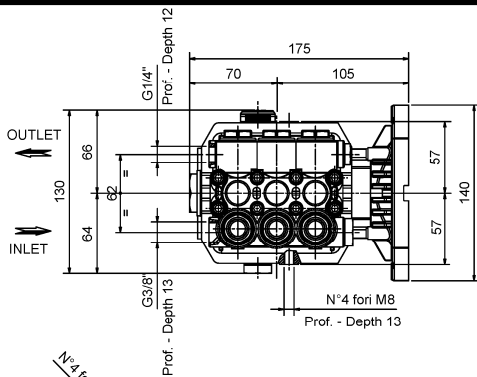
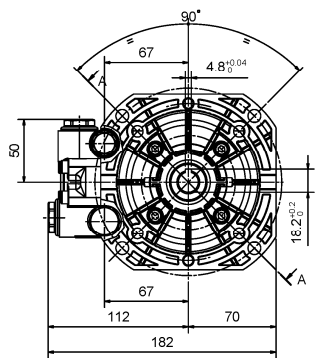
Sez. G-G



COD. DIS. 51.2149.00

VH VALVE

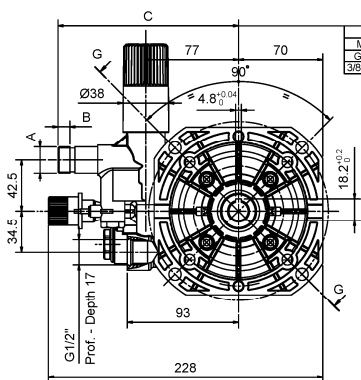
**DIMENSIONI D'INGOMBRO – OVERALL DIMENSIONS – DIMENSIÕES D'ENCOMBRAMENTO
RAUMBEDARF – DIMENSIONES TOTALES – DIMENSÕES**



**W905 – T9051
T1508
T1209
T1212
WW906 – TT9061
WW907 – TT9071**

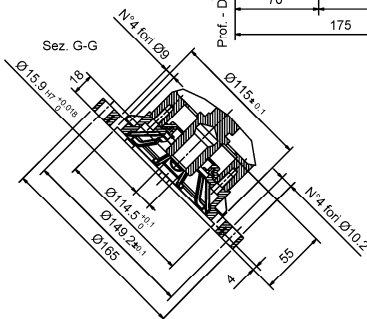
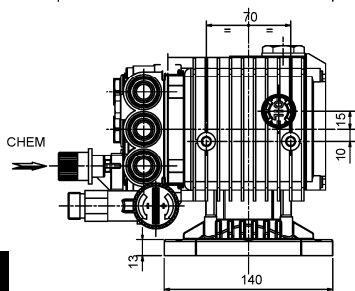
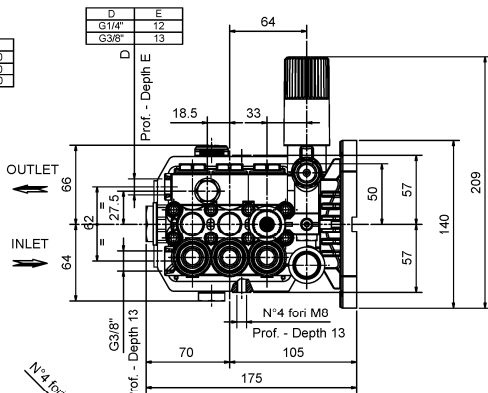
COD. DIS. 51.2146.00

A



| | A | B | C |
|--------------|----|-----|---|
| M22 - M | 10 | 150 | |
| G3/8" - M | 11 | 140 | |
| 3/8" NPT - F | 10 | 150 | |

| D | E | F |
|-------|----|---|
| G1/4" | 12 | |
| G3/8" | 13 | |

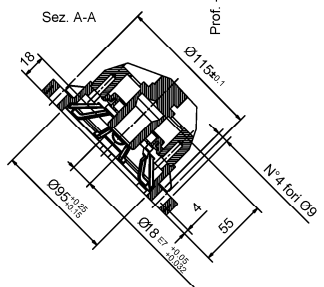
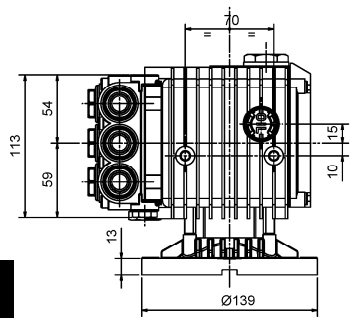
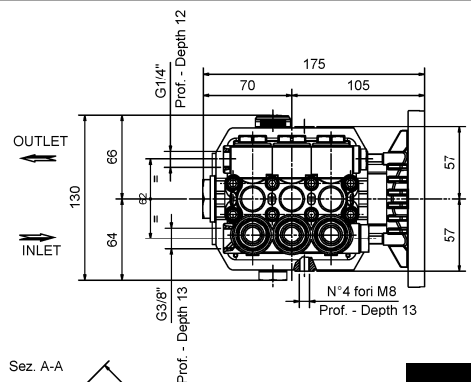
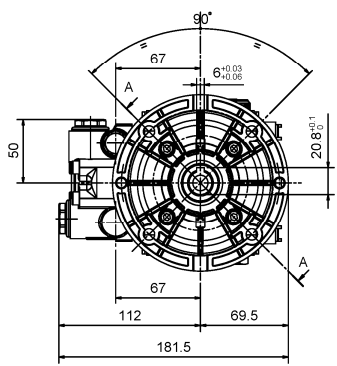


COD. DIS. 51.215300

VH VALVE

A

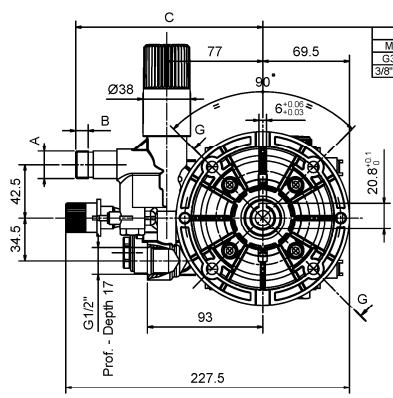
**DIMENSIONI D'INGOMBRO – OVERALL DIMENSIONS – DIMENSIÕES D'ENCOMBREMEN
RAUMBEDARF – DIMENSIONES TOTALES – DIMENSÕES**



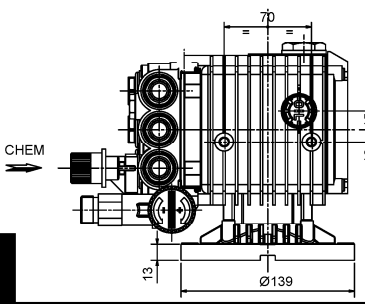
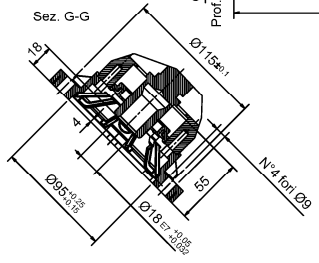
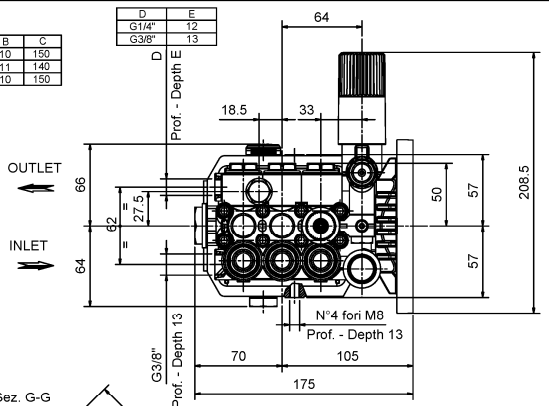
- W1507
- W1208
- W1210
- WW55 – TT551
- WW74 – TT471
- WW90 – TT901
- WW1508
- WW95 – TT951
- WW1510
- WW56 – TT561
- WW75 – TT751
- WW93 – TT931
- WW1511
- WW94 – TT941
- WW1513

COD. DIS. 51.2147.00

B



| D | E |
|-------|----|
| G1/4" | 12 |
| G3/8" | 13 |

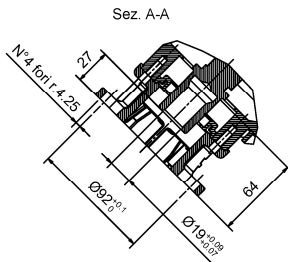
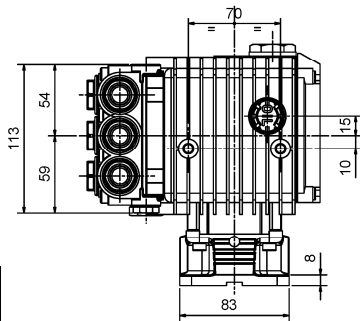
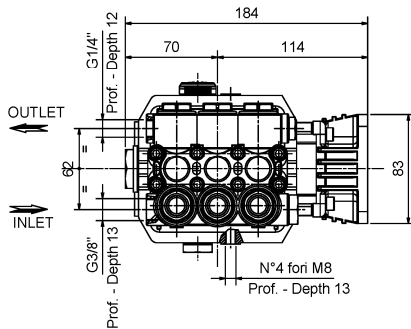
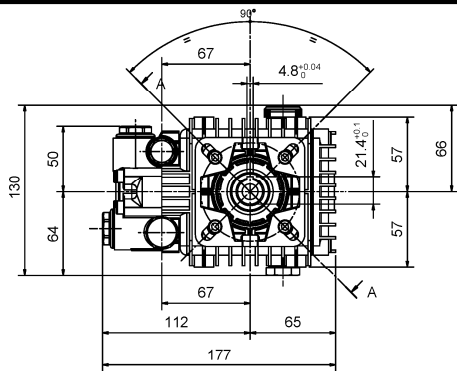


COD. DIS. 51.2154.00

VH VALVE

B

**DIMENSIONI D'INGOMBRO – OVERALL DIMENSIONS – DIMENSIÕES D'ENCOMBREMEN
RAUMBEDARF – DIMENSIONES TOTALES – DIMENSÕES**

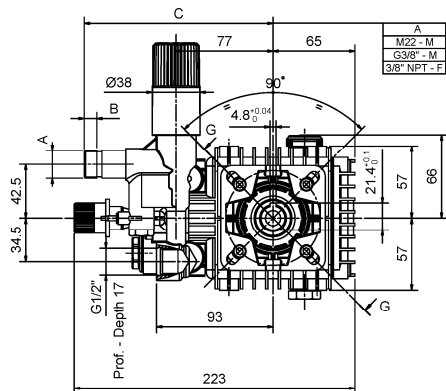


Sez. A-A

**WW906 – TT9061
TT1508
TT1510
WW907 – TT9071
TT1511
TT1512
WW909 – TT9091
TT1513**

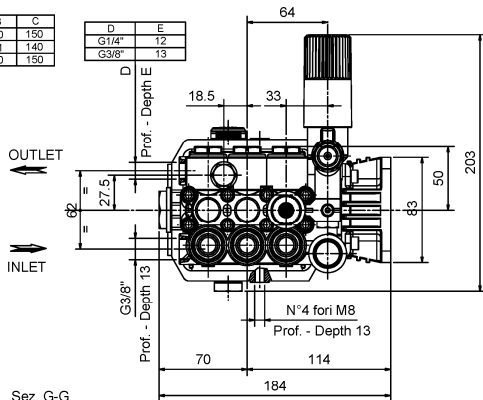
COD. DIS. 51.2148.00

C

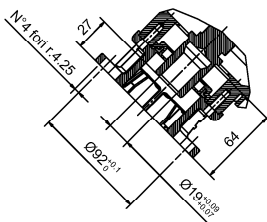
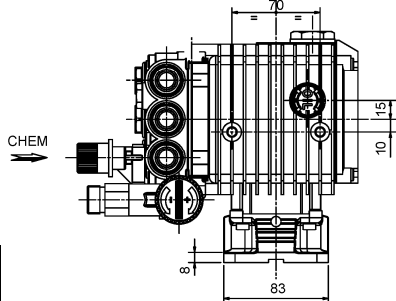


| | A | B | C |
|--------------|----|----|-----|
| M22 - M | 10 | 10 | 150 |
| G3/8" - M | 11 | 11 | 140 |
| 3/8" NPT - F | 10 | 10 | 150 |

| | D | E |
|-------|----|----|
| G1/4" | 12 | 12 |
| G3/8" | 13 | 13 |



Sez. G-G

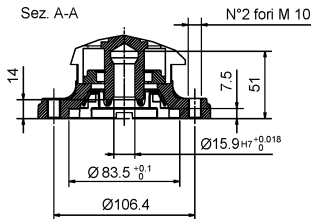
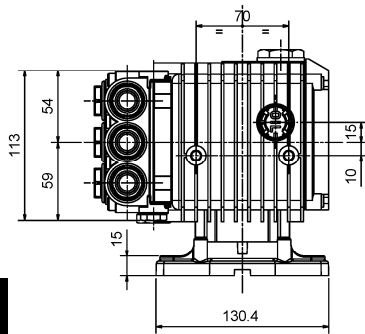
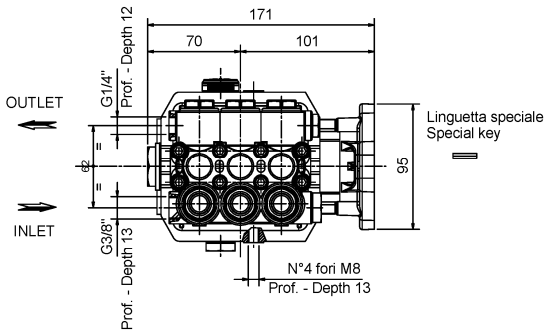
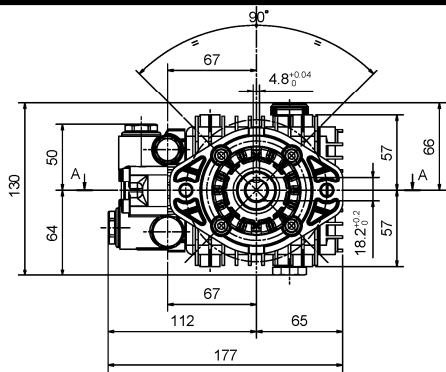


COD. DIS. 51.2155.00

VH VALVE

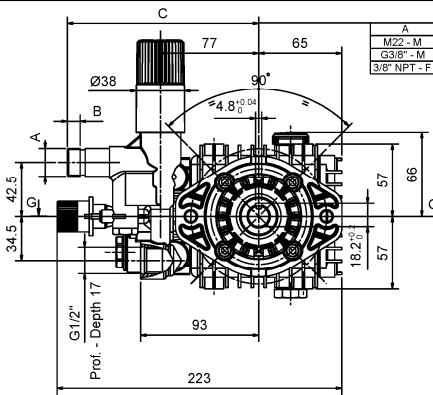
C

**DIMENSIONI D'INGOMBRO – OVERALL DIMENSIONS – DIMENSIÕES D'ENCOMBRAMENTO
RAUMBEDARF – DIMENSIONES TOTALES – DIMENSÕES**



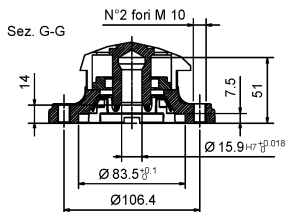
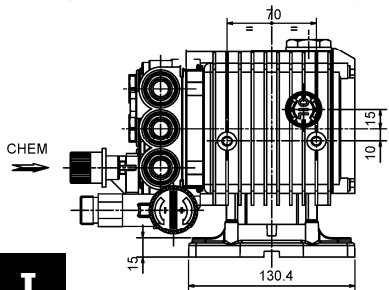
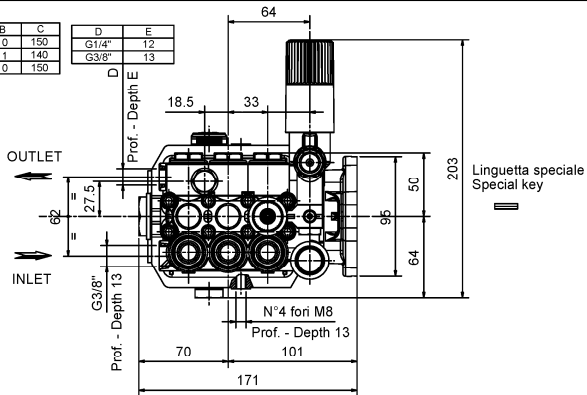
COD. DIS. 51.2141.00

WW1513



| A | B | C |
|--------------|----|-----|
| M22 - M | 10 | 150 |
| G3/8" - M | 11 | 140 |
| 3/8" NPT - F | 10 | 150 |

| D | E |
|-------|----|
| G1/4" | 12 |
| G3/8" | 13 |

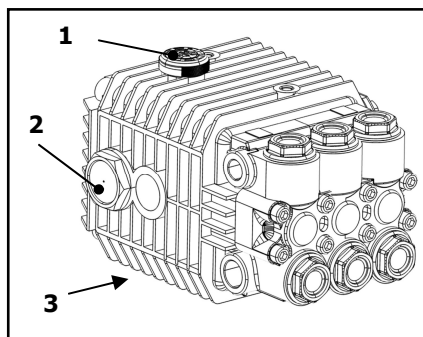


COD. DIS. 51.2166.00

VH VALVE

1 - CAMBIO OLIO

- 1.1 – Il cambio dell'olio va eseguito con pompa a temperatura di lavoro.
- 1.2 – Posizionare un recipiente sotto il tappo di scarico olio (3).
- 1.3 – Rimuovere il tappo con asta (1) e successivamente il tappo di scarico (3).
- 1.4 – Attendere fino a quando tutto l'olio è uscito, quindi riavvitare il tappo di scarico (3) con la coppia torcente indicata su disegno esploso.
- 1.5 – Riempire con olio nuovo fino al raggiungimento della mezzeria del tappo spia livello olio (2) e riavvitare il tappo con asta (1).



Per il tipo di olio da utilizzare fare riferimento a quanto indicato sul libretto generico.



ATTENZIONE: L'olio esausto deve essere raccolto in recipienti e smaltito negli appositi centri in accordo alla normativa vigente. Non deve essere assolutamente disperso nell'ambiente.

1 – OIL CHANGING

- 1.1 – Oil changing must be done with the pump at operating temperature.
- 1.2 – Put a container under the oil drain plug (3).
- 1.3 – Remove the oil dipstick (1) and then the drain plug (3).
- 1.4 – Wait until all the oil has drained out, then screw the drain plug (3) and tighten at the torque shown in the exploded diagram.
- 1.5 – Fill with new oil until the middle of the oil level indicator (2) is reached, screw by hand the oil dipstick (1).

Refer to the generic booklet for the type of oil to use.



WARNING: The exhaust oil must be collected in receptacles and disposed of at authorised centres as specified by law. It must not be thrown away in the environment.

1 - CHANGEMENT DE L'HUILE

- 1.1 – Le changement de l'huile doit être exécuté avec la pompe à température d'exercice.
- 1.2 – Placer un récipient sous le bouchon de vidange de l'huile (3).
- 1.3 – Enlever le bouchon-jauge (1), puis enlever le bouchon de vidange (3).
- 1.4 – Attendre que toute l'huile soit sortie, puis revisser le bouchon de vidange (3) avec le couple de torsion qui est indiqué sur le dessin éclaté.
- 1.5 – Remplir avec de l'huile neuve jusqu'à la ligne médiane du bouchon indicateur du niveau d'huile (2), et revisser le bouchon-jauge (1).

Pour le type d'huile à utiliser, se référer à ce qui est indiqué sur la notice générale.



ATTENTION : L'huile usée doit être recueillie dans des récipients et éliminée dans les centres prévus à cet effet, conformément à la réglementation en vigueur. Il ne faut absolument pas la jeter dans l'environnement.

Déclaration d'incorporation

(Conformément à l'annexe II de la Directive Européenne 2006/42/CE).

Le fabricant **INTERPUMP GROUP S.p.A.** – Via E. Fermi, 25 – 42049 S.ILARIO D'ENZA (RE) - Italie **DÉCLARE** sous sa seule responsabilité que l'équipement identifié et décrit comme suit :

Description: Pompe

Type: Pompe alternative à pistons pour eau à haute pression

Marque de fabrique: INTERPUMP GROUP

Modèle: W1507 – W1208 – W1210 – W905 – T9051 – T1508 – T1209 – T1212 – WW55 – TT551 – WW74
TT741 – WW90 – TT901 – WW1508 – WW1509 – WW95 – TT951 – WW1510 – WW56 – TT561 – WW75
TT751 – WW93 – TT931 – WW1511 – WW94 – TT941 – WW1513 – WW906 – TT9061 – TT1508 – TT1510
WW907 – TT9071 – TT1511 – TT1512 – WW909 – TT9091 – TT1513

Est conforme aux spécifications des directives énumérées ci-dessous et mises à jour suivantes:

- Directive Machines 2006/42/CE

- Directive relative à la limitation de l'utilisation de certaines substances dangereuses dans les équipements électriques et électroniques 2011/65/UE – RoHS

L'équipement ne contient pas de substances assorties de restrictions concernant l'utilisation en concentration plus élevée que celles énumérées à l'annexe II, sauf pour des applications exemptées des restrictions énumérées à l'annexe III.

Normes appliquées : UNI EN ISO 12100:2010 - UNI EN 809:2000

La pompe identifiée ci-dessus répond aux exigences essentielles de sécurité et protection de la santé suivantes énumérées au point 1 de l'annexe I de la Directive Machines :

1.1.2 - 1.1.3 - 1.1.5 - 1.3.1 - 1.3.2 - 1.3.3 - 1.3.4 - 1.5.4 - 1.5.5 - 1.6.1 - 1.7.1 - 1.7.2 - 1.7.4 - 1.7.4.1 - 1.7.4.2
et la documentation technique pertinente est constituée conformément à l'annexe VII B.

De plus, le fabricant s'engage à rendre disponible, suite à une demande adéquatement motivée, une copie de la documentation technique relative à la pompe dans les modes et les termes à définir.

La pompe ne doit pas être mise en marche tant que l'installation à laquelle la pompe doit être incorporée n'a pas été déclarée conforme aux dispositions des directives et / ou normes relatives.

Personne autorisée à réaliser le manuel technique :

Nom : Maurizio Novelli

Adresse: INTERPUMP GROUP S.p.A. – Via E. Fermi, 25 – 42049 S. ILARIO D'ENZA (RE) – Italie

Personne autorisée à rédiger la déclaration :

L'administrateur délégué Ing. Paolo Marinsek

Reggio Emilia 02/2013

Signature 